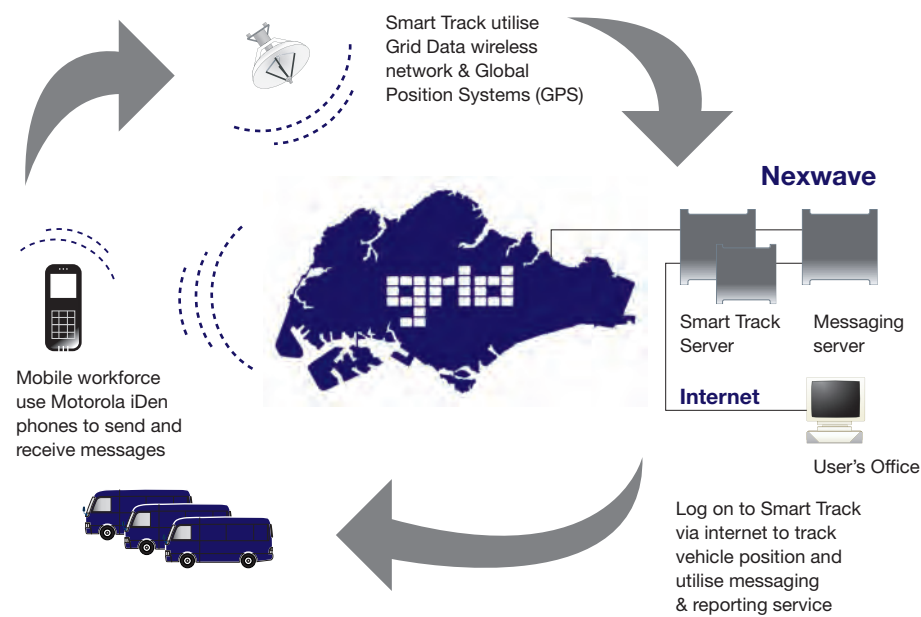


## How It Works?

Log onto the internet in the comfort of your office and in just moments, you will be able to monitor the position of your entire fleet. The solution uses Motorola GPS-enabled handset as the tracking device. It is ideal for business that can use voice and message to communicate with mobile personnel. The handset position shall be transmitted via Grid wireless network to Smart Track server, owned and hosted by NexWave Solutions.



## Set-Up Requirement

Smart Track is a cost effective subscription-based service which companies can start using without significant investment in both hardware and software. There are 3 easy steps to start enhancing your business with tracking intelligence:

1. Get a Motorola GPS-enabled iDEN handset (Model: i205, i305, i58, i730, i830, i325sr)
2. Subscribe to Grid wireless service (Voice & Data)
3. Subscribe to Smart Track

**Be Smart. Track your competitive edge today.**

## Smart Track Vehicle Tracking System



### TRACK YOUR VEHICLE

No expensive hardware or software needed.



Know where your mobile assets are this minute? Get instant, real-time location of your fleet and mobile personnel on the island. Enhance your productivity and customer service through Smart Track today.



**NexWave Solutions** provides next-generation, mobility and wireless solutions for enterprises. Our core expertise in IP and wireless communications helps customers use innovative solutions to obtain competitive advantage.

For more information,  
visit [www.smart-apps.com](http://www.smart-apps.com) | [www.nexwave.com.sg](http://www.nexwave.com.sg)  
email: [sales@nexwave.com.sg](mailto:sales@nexwave.com.sg)  
tel: (+65) 6486 8888 (+65) 6483 7666  
fax: (+65) 6483 7555

NexWave Solutions Pte Ltd. Company Reg. No.: 199 402 532 D. Printed in May 2005.



**Be Smart. Track your competitive edge.**





## Be Smart. Track your vehicle.

Smart Track is a web-based vehicle tracking service, which enables companies to monitor their vehicles' up-to-the-minute locations throughout Singapore. It comes with a full range of features that allow you to perform "live" and "history" track, send and receive messages and generate reports.

The intelligent system utilizes advance technology of Global Positioning System (GPS) and wireless communication to make your business operations more efficient. No heavy investment in system or equipment is required. All you need to do is to equip your fleet with GPS-integrated phone and subscribe to our services.

Smart Track brings you the benefit of asset visibility. The results are productivity gains and better customer service. Enjoy cost savings with a tracking service that is maintenance-free and easily scalable as you increase your workforce.



## Key Benefits

- Locate nearest vehicle instantly
- Reduce fleet mileage
- Reduce labor cost
- Monitor working hours
- Increase business productivity
- Improve customer service
- Improve accountability and make better decision
- Win business confidence

## Our Customers

To date, we have built confidence in our customer relationship with industries including:

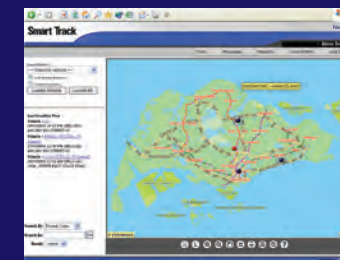
- Logistics & transportation
- Courier & delivery
- Field Service & maintenance
- Construction & engineering
- Wholesales & distribution.

## Key Features

1.

### Real Time Tracking

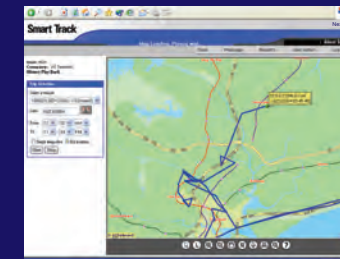
Track your vehicles with up-to-the minute position of your vehicles.



2.

### Historical Tracking

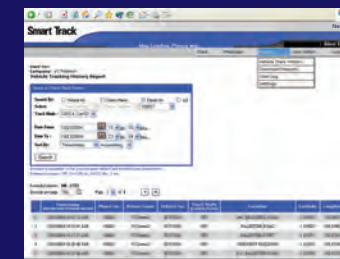
Playback historical route travelled by your mobile workforce up to 3 months ago.



3.

### Report and Analysis:

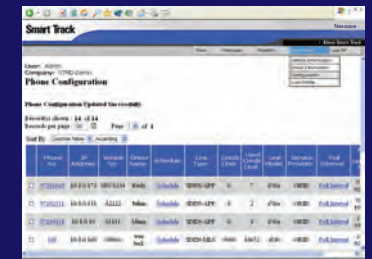
Print or export historical report, with data showing location, time & date, to the spreadsheet for further analysis.



4.

### User Admin Configuration:

Configure your setting, such as driver information, vehicle information and user profile.



5.

### Messaging

Communicate more effectively through text – send message to individual or group of users; receive order status, updates and pre-programmed messages.

